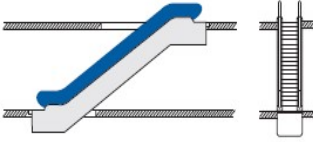
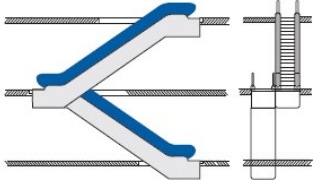
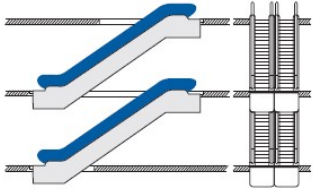
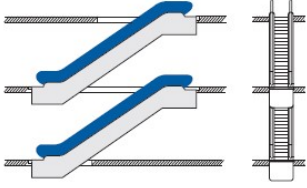
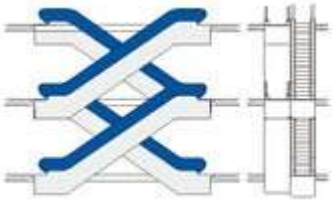


<b>ENQUIRY NO:</b>		<b>DATE:</b>	
--------------------	--	--------------	--

## CONTACT DETAILS

<b>Company Name</b>		<b>Project Name</b>	
<b>Address</b>		<b>Project Address</b>	
<b>Email ID</b>		<b>Site Contact Person</b>	
<b>Telephone No</b>		<b>Contract Number</b>	

## ESCALATOR ARRANGEMENT

<p>1. <b>Single Unit</b></p>		<p>2. <b>Continuous - 1 direction</b></p>	
<p>3. <b>Interrupted 1 direction</b></p>		<p>4. <b>Interrupted - 2 direction</b></p>	
<p>5. <b>Continuous 2 direction</b></p>		<p>6. Quantities</p> <p><b>Location</b>      Indoor      Outdoor</p> <p><b>Horizontal Pallet</b>      Semi-Outdoor</p>	

## TECHNICAL PARAMETERS

<b>Step Width B(mm)</b>	600 / 800 / 1000	<b>Inclination Angle</b>	30° / 35°
<b>Step rated speed (m/s)</b>	0.5 / 0.65	<b>Vertical rise (m)</b>	2 – 10m
<b>Power Voltage (V)</b>		<b>Lightning Voltage (V)</b>	
<b>Power Supply</b>		<b>Frequency (Hz)</b>	

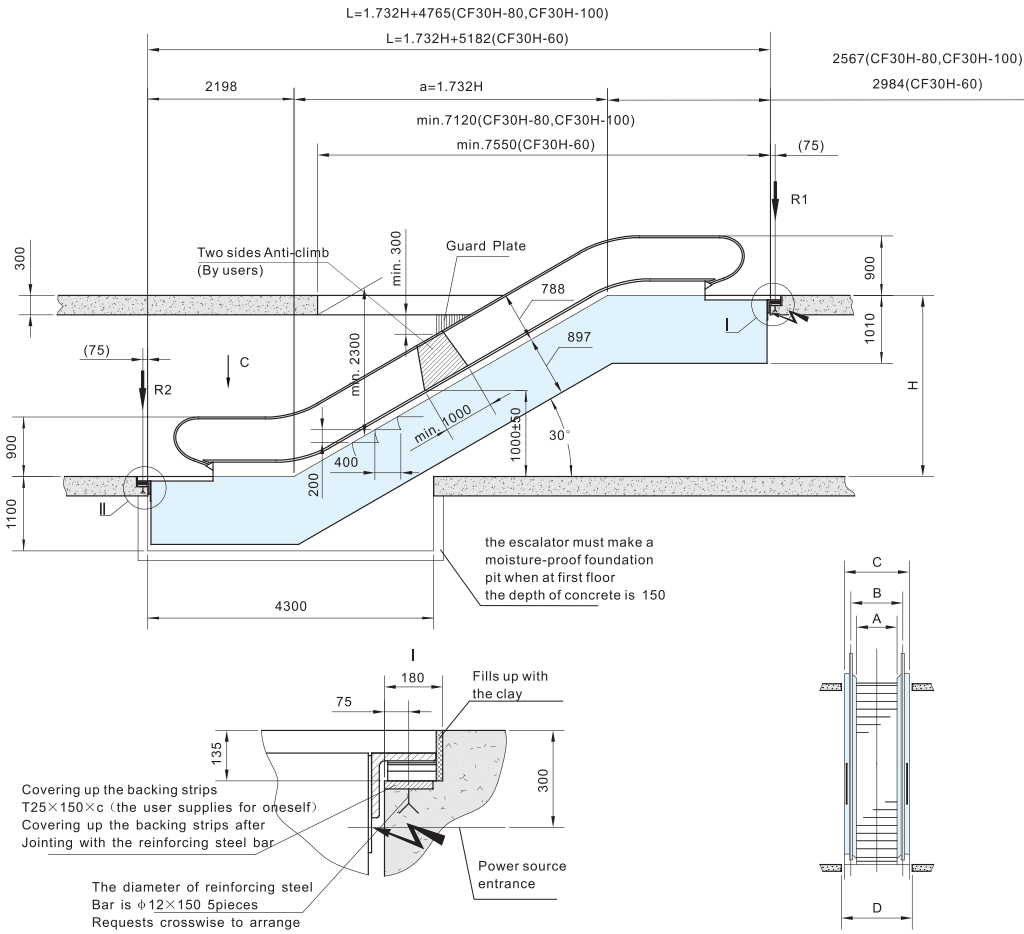
## DOCUMENTS ATTACHED

- A. Municipal Corporation Approved Plan

\_\_\_\_\_

Name    Date    Signature    Stamp

# SCF30H ESCALATOR SERIES



Technical Speed (mm)	Self-weight (KN)	Support counterforce (KN)	
H	G	R1	R2
3000	65.0	61.0	55.0
3100	65.8	62.0	55.8
3200	66.6	63.0	56.6
3300	67.4	64.0	57.4
3400	68.2	65.0	58.2
3500	69.0	66.0	59.0
3600	70.0	66.8	59.8
3700	70.8	67.6	60.6
3800	71.6	68.4	61.4
3900	72.2	69.2	62.2
4000	73.0	70.0	63.0
4100	73.9	71.1	63.8
4200	74.7	72.0	64.6
4300	75.6	73.0	65.4
4400	76.3	74.0	66.2
4500	77.0	75.0	67.0

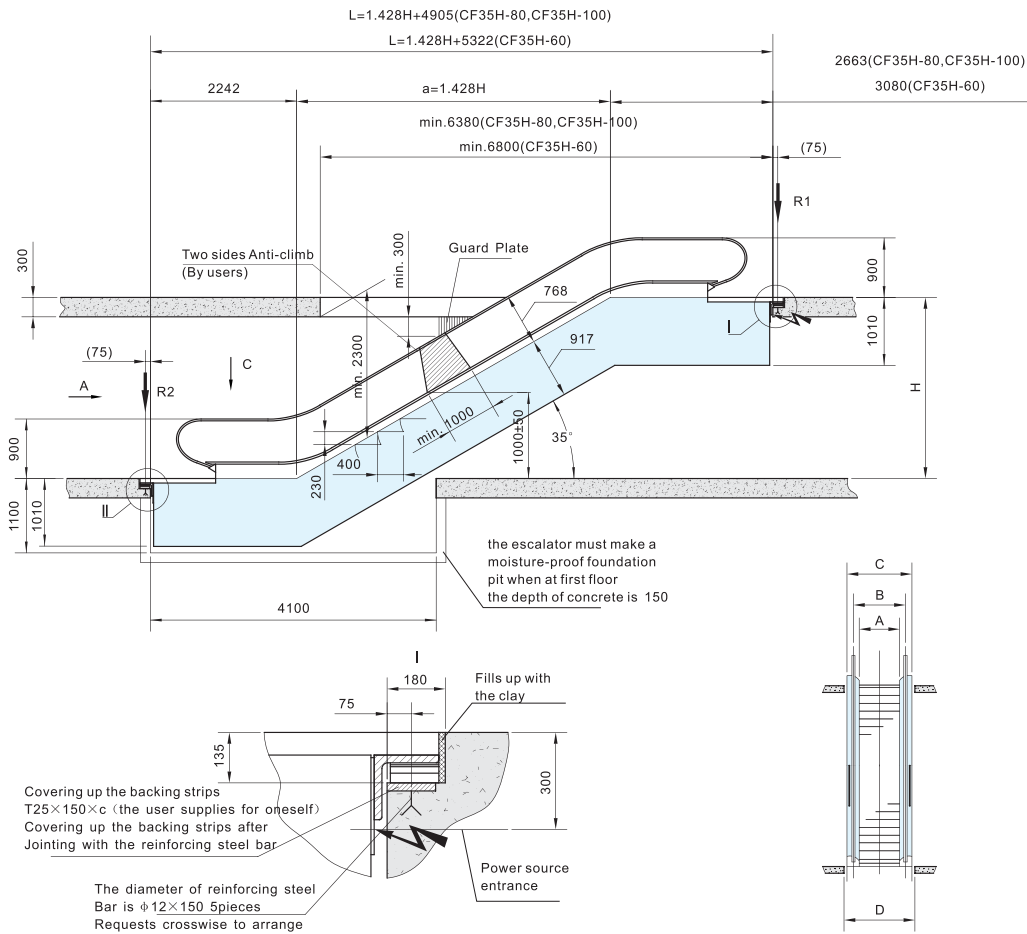
Technical Speed (mm)	Self-weight (KN)	Support counterforce (KN)	
H	G	R1	R2
4600	77.8	76.2	68.2
4700	78.7	77.4	69.4
4800	79.5	78.6	70.6
4900	80.2	79.8	71.8
5000	81.0	81.0	73.0
5100	81.8	82.0	73.8
5200	82.6	83.0	74.6
5300	83.3	84.0	75.4
5400	84.1	85.0	76.2
5500	85.0	86.0	77.0
5600	85.6	86.8	77.8
5700	86.3	87.6	78.6
5800	86.9	88.4	79.4
5900	87.4	89.2	80.2
6000	88.0	90.0	81.0

size code	SCF30H-60	SCF30H-80	SCF30H-100
A	600	800	1000
B	836	1036	1236
C	1200	1400	1600
D	1260	1460	1660
E	1910	2110	2310
F	2660	2860	3260
G	3310	3510	3910

In the table G, R1, R2, R3 are the SCF30H-100 escalators self-weight and supporting reaction; SCF30H-80 escalators self-weight and supporting reaction for table in value 90%. SCF30H-60 escalator self-weight and supporting reaction for table in value 80%.

The schematic drawing of civil work is for reference only

# SCF35H ESCALATOR SERIES



Technical Speed (mm)	Self-weight (KN)	Support counterforce (KN)	
H	G	R1	R2
3000	62.0	53.2	47.9
3100	62.8	54.0	48.6
3200	63.6	54.9	49.3
3300	64.4	55.8	50.0
3400	65.2	56.7	50.7
3500	66.0	57.5	51.4
3600	66.6	58.2	52.1
3700	67.3	58.9	52.8
3800	67.9	59.6	53.5
3900	68.5	60.3	54.2
4000	69.0	61.0	54.9
4100	69.8	61.9	55.6
4200	70.6	62.8	56.3
4300	71.4	63.6	57.0
4400	72.2	64.5	57.7
4500	73.0	65.4	58.4

Technical Speed (mm)	Self-weight (KN)	Support counterforce (KN)	
H	G	R1	R2
4600	73.8	66.4	59.4
4700	74.6	67.5	60.5
4800	75.4	68.5	61.5
4900	76.2	69.6	62.6
5000	77.0	70.6	63.6
5100	77.6	71.5	64.4
5200	78.2	72.4	65.0
5300	78.8	73.2	65.7
5400	79.4	74.1	66.4
5500	80.0	75.0	67.1
5600	80.8	75.7	67.8
5700	81.6	76.4	68.5
5800	82.4	77.1	69.2
5900	83.2	77.8	69.9
6000	84.0	78.4	70.6

size code	SCF35H-60	SCF35H-80	SCF35H-100
A	600	800	1000
B	836	1036	1236
C	1200	1400	1600
D	1260	1460	1660
E	1910	2110	2310
F	2660	2860	3260
G	3310	3510	3910

In the table G, R1, R2, R3 are the SCF35H-100 escalators self-weight and supporting reaction; SCF35H-80 escalators self-weight and supporting reaction for table in value 90%. SCF35H-60 escalator self-weight and supporting reaction for table in value 80%.

The schematic drawing of civil work is for reference only